



GGB-SHB[®]

**CASE HARDENED
STEEL BEARINGS**



APPLICATIONS

Industrial – Earth moving machinery, excavators, drilling machinery, farming machinery, various equipment grabs, buckets, grippers, hydraulic cylinder

CHARACTERISTICS

- Steel bushings ideally suited for lubricated applications
- With plain or grooved sliding layer
- Suitable for grease lubrication
- Low rotation speed with high specific pressure

AVAILABILITY

Bearing forms available in standard dimensions: Plain cylindrical bushes

Bearing forms made to order: Bearings with various lubrication grooves, non-standard parts

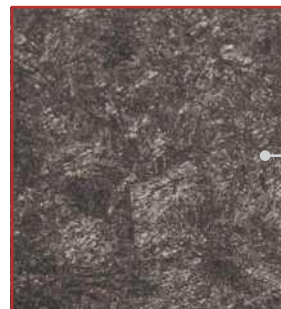


For questions and assistance, contact a GGB engineer at: <https://www.ggbearings.com/en/contact>

BEARING PROPERTIES		IMPERIAL UNITS	IMPERIAL VALUE	METRIC UNITS	METRIC VALUE
GENERAL					
Maximum load, p	Static	psi	43 500	N/mm ²	300
	Dynamic	psi	21 500	N/mm ²	150
Tensile strength		psi	79 750	N/mm ²	550
Maximum operating temperature		°F	302	°C	150
Density			0.282		7.8
Coefficient of linear thermal expansion		10 ⁻⁶ /F	6.67	10 ⁻⁶ /K	12
GREASE LUBRICATED					
Maximum sliding speed, U		fpm	19.7	m/s	0.1
Maximum pU factor		psi x fpm	42 000	N/mm ² x m/s	1.5
Coefficient of friction, f			0.2		0.2
MATING MATERIAL					
Bearing surface roughness, Ra		µin	≤ 31.5	µm	≤ 0.8
Bearing surface hardness		HRC	58 - 62	HRC	58 - 62

OPERATING PERFORMANCE	
Dry	Poor
Oil lubricated	Good
Grease lubricated	Very Good
Water lubricated	Not recommended
Process fluid lubricated	Depending on fluid

MICROSECTION



Steel E410, E470
(20MnV6, AISI A381)
acc. to EN 10305