

Solid Bronze

Solid Bronze Alloy Bearings according to ISO 4379



CHARACTERISTICS

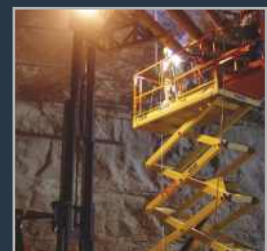
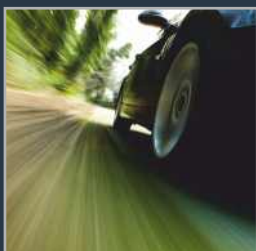
- Conventional bearing material for lubricated applications in general engineering applications
- Suitable for oil and grease lubrication

AVAILABILITY

Bearing forms made to order: cylindrical bushes with bronze alloy according to ISO 4379, special parts according to ISO, DIN or customer design, special alloys

APPLICATIONS

Industrial: Mechanical handling and lifting equipment, general and special engineering, agricultural equipment, textile machinery, automotive engineering, etc.



Solid Bronze Technical Data

Bearing Properties		Imperial Units	Imperial Value	Metric Units	Metric Value
General					
Maximum load, p	Static	psi	29 000	N-mm ²	200
	Dynamic	psi	15 000	N-mm ²	100
Operating temperature	Min	°F	- 40	°C	- 40
	Max	°F	280	°C	140
Grease Lubricated					
Maximum sliding speed, U		fpm	500	m/s	2.5
Maximum pU factor		psi x fpm	80 000	N/mm ² x m/s	2.8
Coefficient of friction			0.09 - 0.15		0.09 - 0.15
Recommendations					
Shaft surface roughness, Ra		µin	8 - 32	µm	0.2 - 0.8
Shaft surface hardness		HB	> 350	HB	> 350

Operating Performance

Dry	Not recommended
Oil lubricated	Good
Grease lubricated	Good
Water lubricated	Not recommended
Process fluid lubricated	Not recommended

Microsection



CuSn12