

## SBC with HSG

### Sealed Fiber Reinforced Composite Bearings



#### CHARACTERISTICS

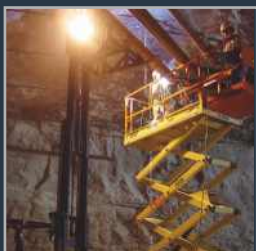
- Self-lubricating bearings
- High static load capacity
- Excellent resistance to shock loading and misalignment
- Very good friction and wear properties
- Good chemical resistance
- Sealed to exclude contaminants to offer extended service life
- Environmentally friendly and eliminates need for automated grease system and grease

#### AVAILABILITY

**Bearing forms made to order:** GGB SBC with HSG sealed assemblies with or without steel outer shell, customized bearing designs

#### APPLICATIONS

**Industrial:** Steering linkages, hydraulic cylinder pivots, king pin bearings, boom lifts, scissor lifts, cranes, hoists, lift gates, backhoes, trenchers, skid steer loaders, front end loaders, etc.



## SBC with HSG Technical Data

Bearing Properties		Imperial Units	Imperial Values	Metric Units	Metric Value
<b>General</b>					
Maximum Load	Static	psi	60 000	N/mm <sup>2</sup>	415
	Dynamic	psi	20 000	N/mm <sup>2</sup>	140
Seal Temperature Limits	Continuous	°F	200	°C	93
	Intermittent	°F	220	°C	104
<b>Dry</b>					
Maximum Sliding Speed U		fpm	25	m/s	0.13
Maximum pU factor		psi x fpm	30 000	N/mm <sup>2</sup> x m/s	1.05
<b>Recommendations</b>					
Shaft surface roughness, Ra		µin	6 - 16	µm	0.15 - 0.40
Shaft surface hardness	Normal	HB	> 350	HB	> 350
	For Longer Service Life	HB	> 480	HB	> 480

\* Depending on operating conditions

### Operating Performance

Dry	Very Good
Oil lubricated	Fair
Grease lubricated	Fair
Water lubricated	Fair
Process fluid lubricated	Fair