

GGB-MEGALIFE™ XT

Fiber Reinforced Composite PTFE Thrust Washers



CHARACTERISTICS

- Proprietary filled PTFE tape liner on both surfaces
- Excellent shock resistance
- High load capacity
- Excellent misalignment resistance
- Excellent contamination resistance
- Good surface speed capability
- Very good friction and wear properties
- Good chemical resistance

AVAILABILITY

Bearing forms available in standard dimensions

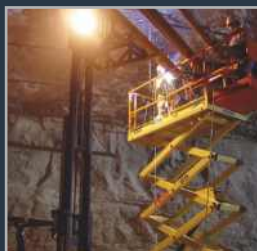
- ⊙ Plain thrust washers

Bearing forms made to order: thrust washers
with non-standard dimensions



APPLICATIONS

Industrial: Pulley spacers, gear spacers, aerial lifts, fork lift masts, king pins, steering links, lift gates, cranes, backhoes, valve actuator linkages, etc..



GGB-MEGALIFE™ XT

Bearing Properties		Imperial Units	Imperial Value	Metric Units	Metric Value
General					
Maximum load, p	Static	psi	20 000	N/mm ²	140
	Dynamic	psi	20 000	N/mm ²	140
Operating temperature	Min	°F	- 320	°C	- 195
	Max	°F	350	°C	175
Dry					
Maximum sliding speed, U		fpm	100	m/s	0.5
Maximum pU factor		psi x fpm	35 000	N/mm ² x m/s	1.23
Coefficient of friction			0.02 - 0.12*		0.02 - 0.12*
Recommendations					
Shaft surface roughness, Ra	Normal	µin	≤ 16	µm	≤ 0.4
Shaft surface hardness	Normal	HB	> 200	HB	> 200

* Depending on operating conditions

Operating Performance

Dry	Very Good
Oil lubricated	Fair
Grease lubricated	Poor
Water lubricated	Very Good
Process fluid lubricated	Fair

For Superior Performance

Oil lubricated	HPF
Grease lubricated	DX
Process fluid lubricated	HPF

Microsection

