

# Move Forward with TriboShield® Coating Solutions



## TriboShield® TS651

TS651 is based on high-performance thermoplastics specifically designed for constant low friction from low to moderately high loads in dry or lubricated conditions. Highly suitable for high-frequency / low amplitude (HFLA) applications, particularly in dry conditions. TS651 is part of the standard TriboShield® product range.

### TYPICAL APPLICATIONS

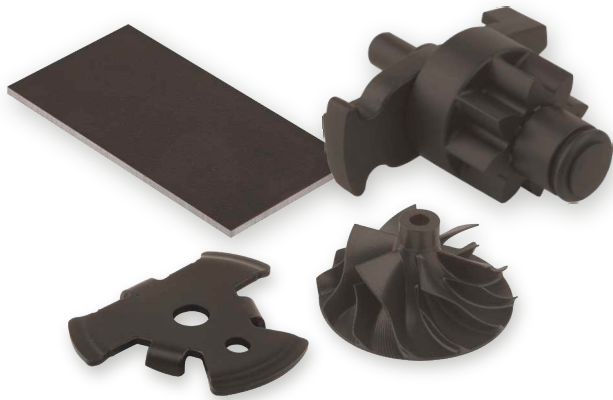
- Solenoid armatures
- Seat mechanisms, struts and shock absorbers...
- Compressors and radial piston pumps
- Hydraulic pumps and motors

### UNIQUE CHARACTERISTICS

- Excellent performance in dry
- Good performance in lubricated condition
- Very low stick-slip characteristic
- Excellent wear resistance up to moderately high loads

### TRIBOMATE® UPGRADE AVAILABLE

Yes



TriboShield® coated products examples



## TECHNICAL DATA

COATING PROPERTY	UNIT	VALUE
Color*	-	Dark Brown
Maximum continuous service temperature	°C / °F	260 / 500
Maximum short-term peak temperature	°C / °F	280 / 536
Friction coefficient, typical range**	-	0.06 - 0.30
Food contact compliant***	-	Yes

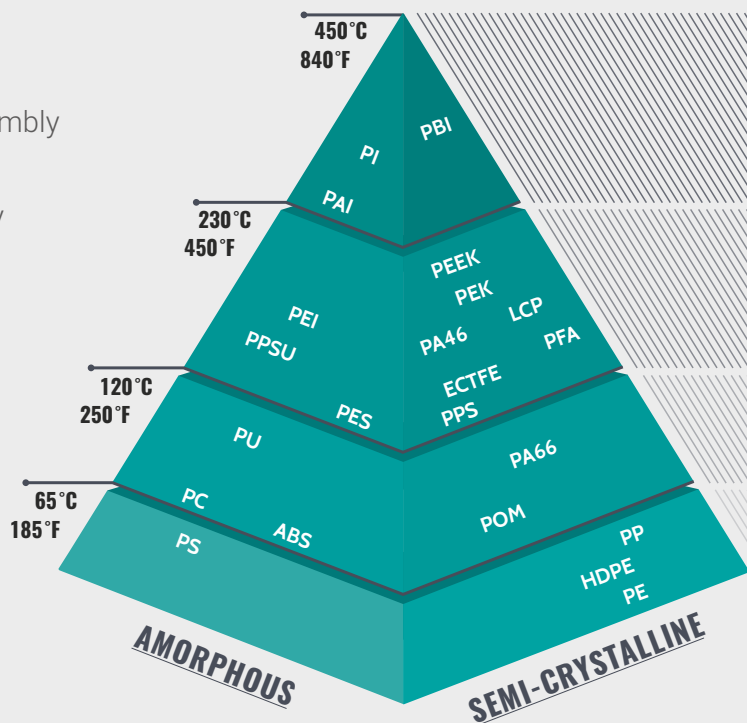
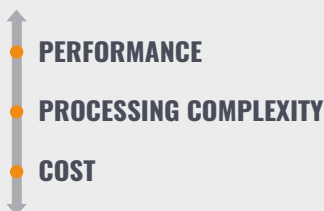
\* Other colors possible upon customization request (limited)  
 \*\* Dependent on contact pressure, sliding speed and contact geometry.  
 \*\*\* Your specific food contact condition may require additional approval.  
 Please contact your GGB representative for more information.

## TriboShield® Standard Product Range

### COATING ADVANTAGES

- More compact design
- Less complex system assembly
- Reduced weight
- Increased surface durability

### Standard Coatings Range



### PRODUCT RANGE

- TriboShield TS801
- TriboShield TS742
- TriboShield TS741
- TriboShield TS652
- **TriboShield TS651**
- TriboShield TS650
- TriboShield TS225