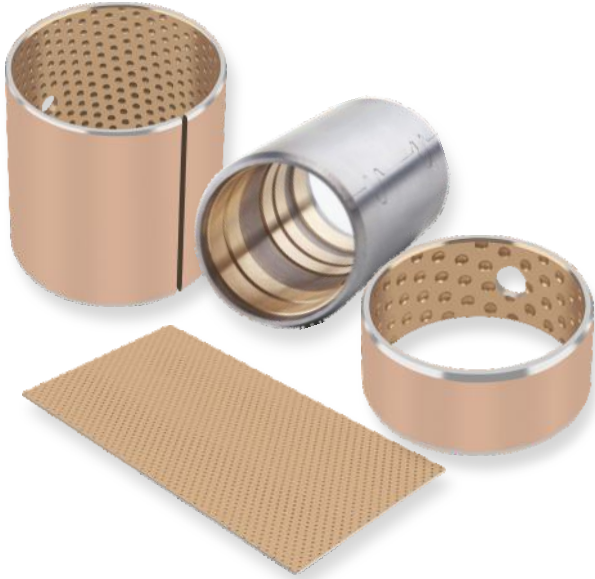


BIMETAL PLAIN BEARINGS TO STANDARD SAE 792



APPLICATIONS

Industrial – Mechanical handling and lifting equipment, hydraulic cylinders, agricultural equipment, off highway equipment etc.

CHARACTERISTICS

- Bimetal bearing with steel backing and bronze overlay
- Particularly suitable for high specific loads with oscillating motion and low frequency
- Applicable in rough operation conditions
- High load capacity, very good resistance to fatigue strength at higher temperatures

AVAILABILITY

Bearing forms available in standard dimensions: Cylindrical bushes, thrust washers

Bearing forms made to order: Cylindrical bushes and thrust washers with non-standard dimensions, sliding plates, customized bearing designs

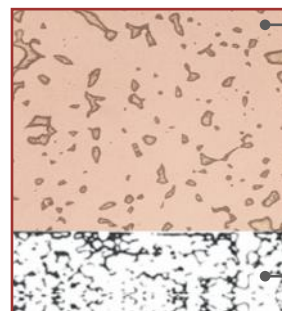


BEARING PROPERTIES		UNITS	VALUE
GENERAL			
Maximum load, p	Static	N/mm ²	300
	Dynamic	N/mm ²	140
Operating temperature	Min	°C	- 40
	Max greased	°C	150
	Max oil lubricated	°C	250
GREASE/OIL LUBRICATED			
Maximum sliding speed, U		m/s	2.5
Maximum pU factor		N/mm ² x m/s	2.8
Coefficient of friction, f	Greased		0.05 - 0.12
	Oiled		0.04 - 0.12
RECOMMENDATIONS			
Shaft surface roughness, Ra		µm	≤ 0.8
Shaft surface hardness	Normal	HB	> 200
	For longer service life	HB	> 350

OPERATING PERFORMANCE

Dry	Poor
Oil lubricated	Good
Grease lubricated	Very Good
Water lubricated	Poor
Process fluid lubricated	Poor

MICROSECTION



CuPb10Sn10 with composition approx.:
 Cu 80 %
 Pb 10 %
 Sn 10 %

Steel Backing