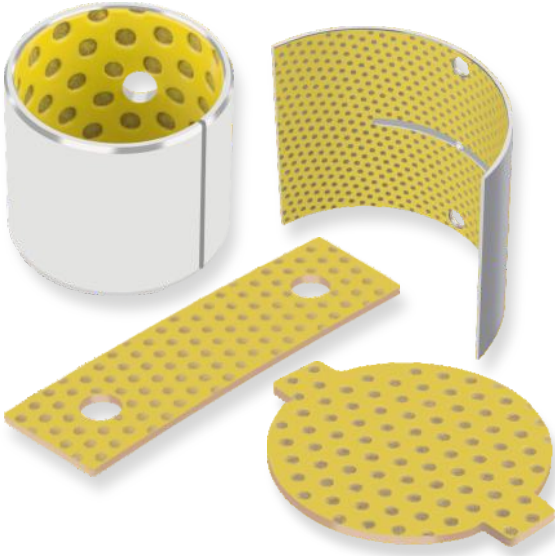


### METAL-POLYMER PLAIN BEARINGS GREASE LUBRICATED



### APPLICATIONS

**Automotive** – Steering gear, power steering, pedal bushes, seat slides, king-pin bushes, tailgate pivots, brake caliper bushes, etc.

**Industrial** – Mechanical handling and lifting equipment, machine slides, hydraulic cylinders, hydraulic motors, ski-lifts, pneumatic equipment, medical equipment, textile machinery, agricultural equipment, scientific equipment, etc.

### CHARACTERISTICS

- DX marginally lubricated bushings for grease or oil lubricated applications
- Standard parts contain grease indents in the sliding layer; plain sliding layer available by request
- Optimum performance under relatively high loads and low speeds
- Suitable for linear, oscillating and rotating movements
- Wide range of parts available from stock

### AVAILABILITY

**Bearing forms available in standard dimensions:** Cylindrical bushes, thrust washers, sliding plates

**Metric bearings and imperial bushings made to order:** standard bushing forms in special dimensions, half-bushings, special shapes obtained by stamping, bearings with locating notches, lubricant holes and machined grooves, customized bushing designs



| BEARING PROPERTIES |  | UNITS | VALUE |
|--------------------|--|-------|-------|
|--------------------|--|-------|-------|

**GENERAL**

|   |                         |                     |      |
|---|-------------------------|---------------------|------|
| Maximum load, p                         | Static                  | N/mm <sup>2</sup>   | 140  |
|   | Dynamic                 | N/mm <sup>2</sup>   | 140  |
| Operating temperature                   | Min                     | °C                  | - 40 |
|   | Max                     | °C                  | 130  |
| Coefficient of linear thermal expansion | Parallel to the surface | 10 <sup>-6</sup> /K | 11   |
|   | Normal to the surface   | 10 <sup>-6</sup> /K | 29   |

**GREASE LUBRICATED**

|                            |  |                         |             |
|----------------------------|--|-------------------------|-------------|
| Maximum sliding speed, U   |  | m/s                     | 2.5         |
| Maximum pU factor          |  | N/mm <sup>2</sup> x m/s | 2.8         |
| Coefficient of friction, f |  |                         | 0.06 - 0.12 |

**RECOMMENDATIONS**

|                             |                         |    |        |
|-----------------------------|-------------------------|----|--------|
| Shaft surface roughness, Ra | Lubricated              | µm | ≤ 0.40 |
| Shaft surface hardness      | Normal                  | HB | > 200  |
|                             | For longer service life | HB | > 350  |

**OPERATING PERFORMANCE**

|                          |           |
|--------------------------|-----------|
| Dry                      | Poor      |
| Oil lubricated           | Good      |
| Grease lubricated        | Very Good |
| Water lubricated         | Poor      |
| Process fluid lubricated | Poor      |

**FOR SUPERIOR / LEAD-FREE PERFORMANCE**

|                          |                               |
|--------------------------|-------------------------------|
| Dry                      | GAR-MAX / HSG / GAR-FIL / MLG |
| Water lubricated         | HPM / HPF / DP4-B             |
| Process fluid lubricated | DP4 / HI-EX / GAR-FIL         |

**MICROSECTION**

