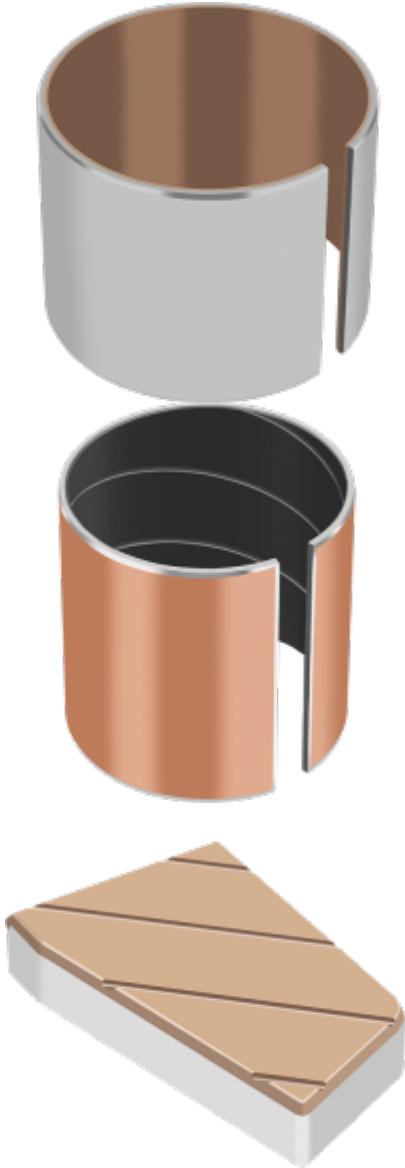
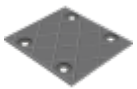
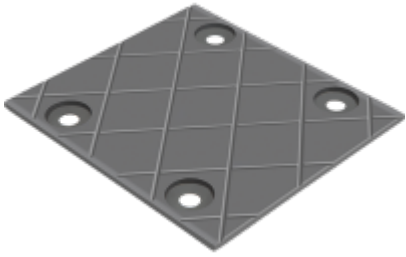


GGB-CBM®

Thin Walled Bimetal Bearings made by Metallurgic Powder

[Request a quote](#)





- [Datasheet](#)
- [Brochure](#)

- [Return to homepage](#)
- Print
- Pdf
- Node

- Entity Print

[Share](#)

[Print](#)

Characteristics

- Self-lubricating and maintenance-free bearings with homogeneously distributed solid lubricant (graphite) in the sliding layer
- High load capacity and suited to temperatures from -150°C up to 280°C
- Different metallic backings are available: stainless steel, carbon steel or bronze
- Lead-free alloys are available

AVAILABILITY

Bearing forms made to order: cylindrical bearings, flanged bearings, axial washers, sliding plates, half shells, axial and radial segment rings, spherical plain bearings, customized bearing forms

Brochure

GGB-CSM® & GGB-CBM® - Metal and Bimetal - Lead-free Bearing Solutions

[Download](#)

Datasheet

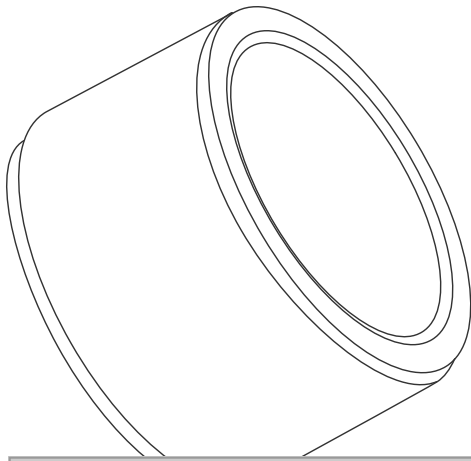
GGB CBM - Thin Walled Bimetal Bearing Material

File / Datasheet

[Download](#)

Composition

Thin walled powder metallurgical bimetal bearing material



[FIND ALL PARTS AND DIMENSIONS](#)

You may also like

GGB-CSM®



[Thick Walled Monometal Bearings](#)

[Request a quote](#)

- [Datasheet](#)
- [Brochure](#)

GGB's benefits



GGB Advantage

[Find out how GGB can be the solution you need](#)





Careers

[Review our current job openings and apply.](#)



Quality Driven

[Quality and environmental respect are essential to our core values](#)



Partnership

[Learn more about partnering with GGB and the benefits of a collaborative partnership.](#)



Enpro

[GGB, an Enpro company](#)



TriboU

[Providing the working engineer with an understanding of basic tribological concepts](#)

Need advice?

Our experts are ready to help you find the right solution for your specific application.

[Contact us](#)