

# KA Glacetal

Engineered Plastic Thrust Washer

[Request a quote](#)



- [Datasheet](#)
- [Brochure](#)
- [CAD drawings](#)
  
- [Return to homepage](#)
- print
- pdf
- node
- Entity Print

[Share](#)

[Print](#)

## Characteristics

- Good bearing performance in light duty working conditions
- Good performance in lubricated or marginally lubricated applications
- Corrosion resistant in humid/saline environments

- Very good price performance ratio
- Very good weight performance ratio

## AVAILABILITY

### Bearing forms available in standard dimensions

- Plain thrust washers

Brochure

GGB EP® Range - Engineered Plastics Bearings - Performance in all Shapes

[Download](#)

Datasheet

GGB KA Glacetal - Engineered Plastic Thrust Washer

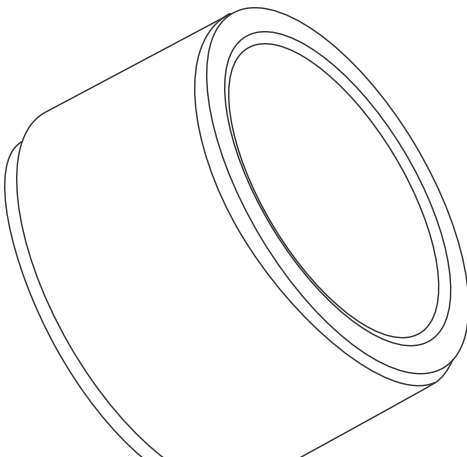
File / Datasheet

[Download](#)

## Composition

Engineered Plastic Thrust Washer

POM



[Find all parts and dimensions](#)

**You may also like**

## EP® 12



[Self-Lubricating Engineered Plastic Bushings](#)

[Request a quote](#)

- [Datasheet](#)
- [Brochure](#)

## EP® 22



[Self-Lubricating Engineered Plastic Bushing](#)

[Request a quote](#)

- [Datasheet](#)
- [Brochure](#)

### **Need advice?**

Our experts are ready to help you find the right solution for your specific application.

[Contact us](#)