

MLG

Self-Lubricating Fiber Reinforced Composite Bearing

[Request a quote](#)



- [Datasheet](#)
- [Brochure](#)
- [CAD drawings](#)

- [Return to homepage](#)
- Print
- Pdf
- Node
- Entity Print

[Share](#)

[Print](#)

Characteristics

- Value engineered filament wound bearing for lighter duty applications
- High load capacity
- Good misalignment resistance
- Excellent shock resistance
- Good friction and wear properties
- Good chemical resistance

AVAILABILITY

Bearing forms available in standard dimensions

- Plain cylindrical bushes

Bearing forms made to order: cylindrical bushes with non-standard lengths and wall thickness, flanged bearings, hexagonal and square bores, liner on outer diameter, customized bearing designs

Brochure

GGB FRC Range - Fiber Reinforced Composite Bearings - High Load Self-Lubricating Bearings

[Download](#)

Datasheet

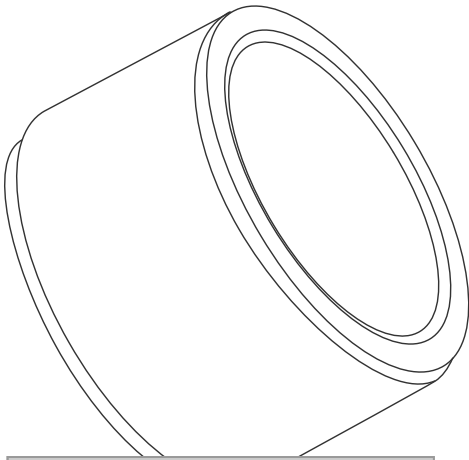
GGB MLG - Maintenance-free Fiber Reinforced Composite Bearing Material

File / Datasheet

[Download](#)

Structure & Composition

- Fiber and Epoxy Resin Composite Material
- Continuous wound PTFE and high-strength fibers encapsulated in an internally lubricated, high temperature filled epoxy resin sliding layer + continuous wound fiberglass encapsulated in a high temperature epoxy resin



[Find all parts and dimensions](#)

You may also like

[GAR-MAX®](#)

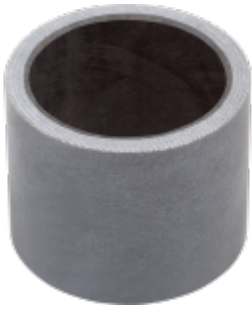


[Self-Lubricating Fiberglass Reinforced Plain Bearing](#)

[Request a quote](#)

- [Datasheet](#)
- [Brochure](#)

[HSG](#)



[High-Load Fiber Reinforced Composite PTFE Bearings](#)
[Request a quote](#)

- [Datasheet](#)
- [Brochure](#)

GAR-FIL



[Fiber Reinforced Composite Bearing with PTFE Tape Liner](#)
[Request a quote](#)

- [Datasheet](#)
- [Brochure](#)

GGB's benefits

- 

GGB Advantage

[Find out how GGB can be the solution you need](#)

- 

Careers

[Review our current job openings and apply.](#)



Quality Driven

[Quality and environmental respect are essential to our core values](#)



Partnership

[Learn more about partnering with GGB and the benefits of a collaborative partnership.](#)



Enpro

[GGB, an Enpro company](#)



TriboU

[Providing the working engineer with an understanding of basic tribological concepts](#)

Need advice?

Our experts are ready to help you find the right solution for your specific application.

[Contact us](#)